

中阮

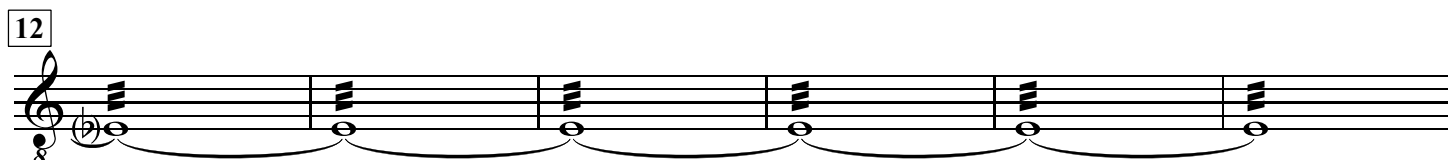
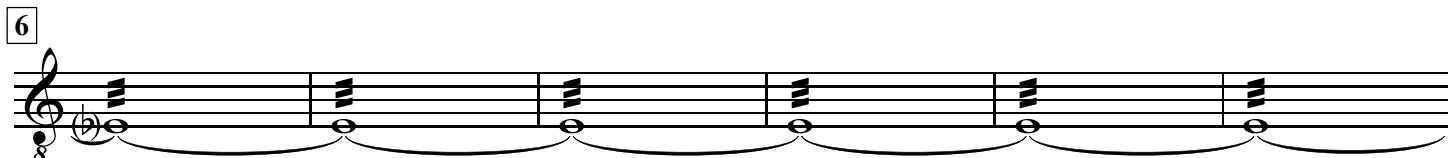
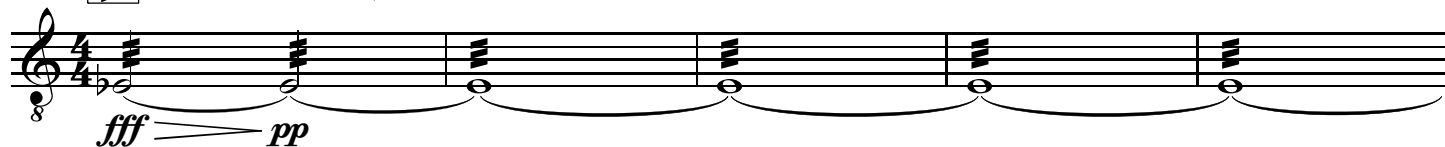
賽馬會中樂360

唐響

(中級)

伍卓賢 曲、編

夢 ♩ = 62 ca. 稍自由



25 ♩ = 56 ca.

8 *mp*

29

33

37

41 *mf*

45

49 *f*

52 *mf*

54 *f*

56 *mp* *p*

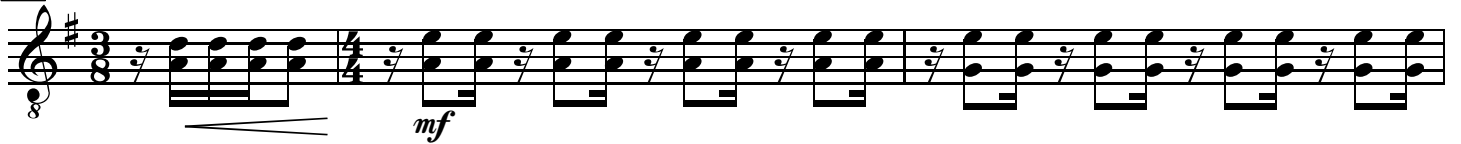
59



62



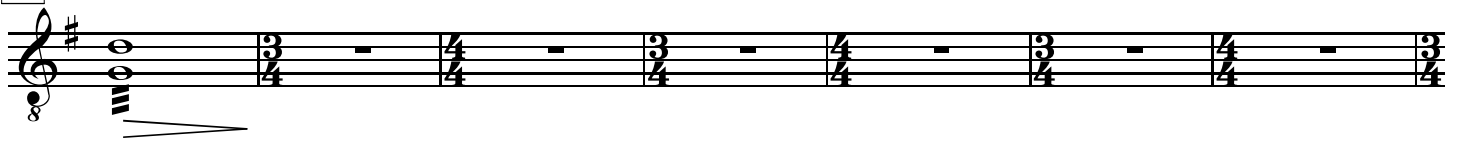
65



68



71



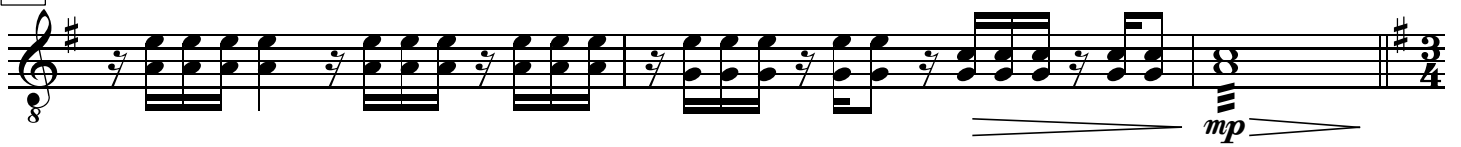
78



81



84



87



90



94 盛 $\text{♩} = 78 \text{ ca.}$
4

(柳琴)

103

ff

111 $\text{♩} = 156 \text{ ca.}$
div.
 f

114

117

120

mf ff mp

123

126

129

132

mp

135

138

141

144

147

150

153

156

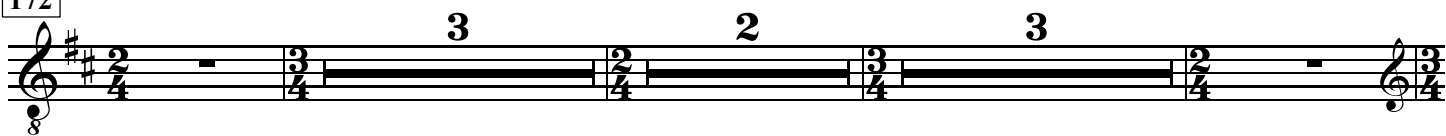
159

162

165

168

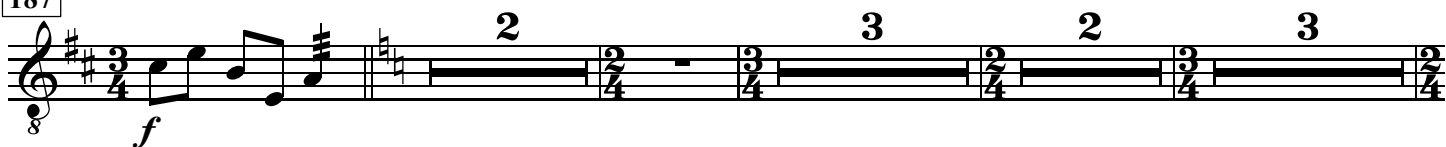
172



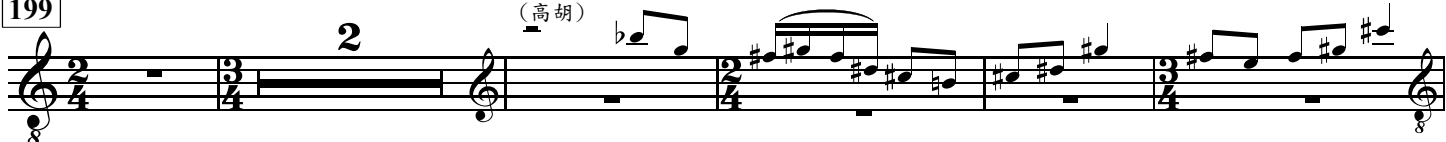
182



187



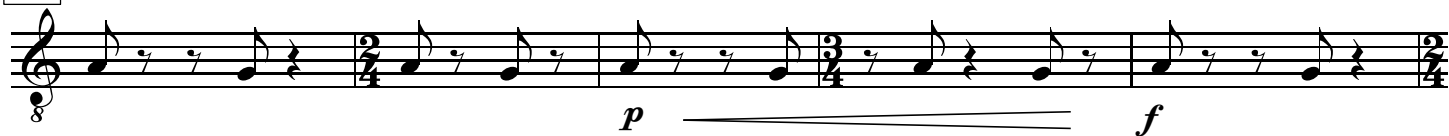
199



206



211



216



220



224



228



232



236



240



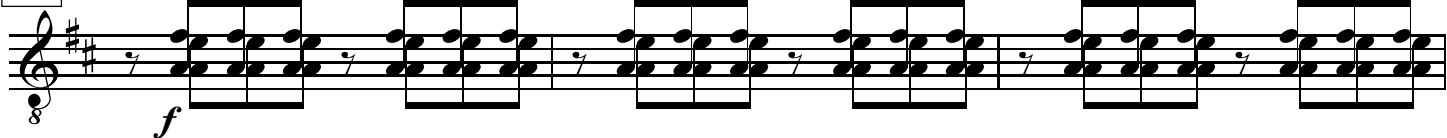
244



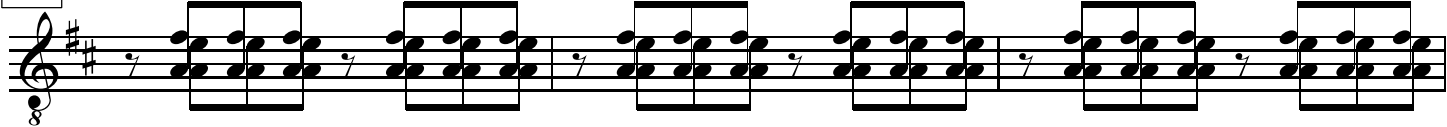
249



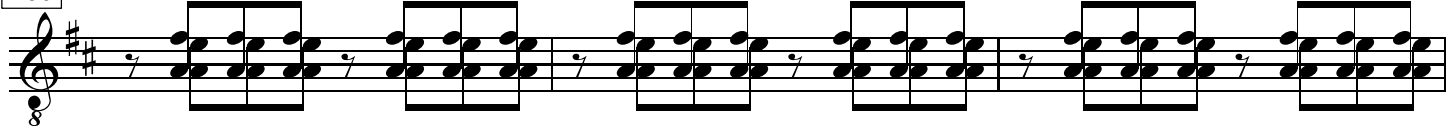
254



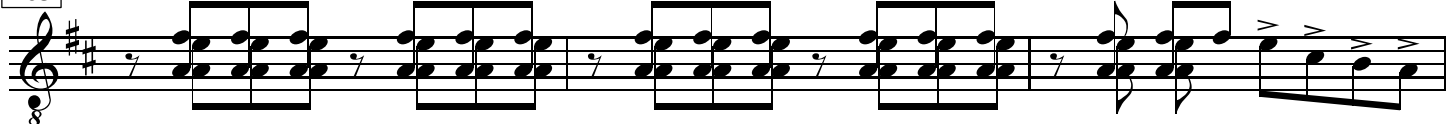
257



260



263



266



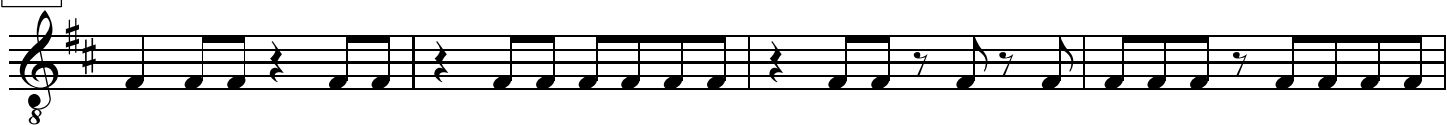
270



274



278



282



286

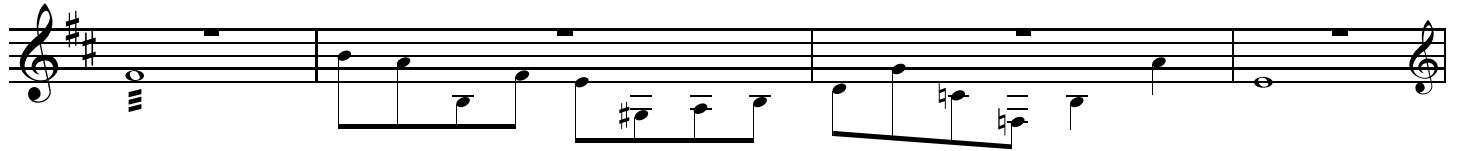
舞

♩ = 62 ca.

(琵琶)



291



295



302



307



311



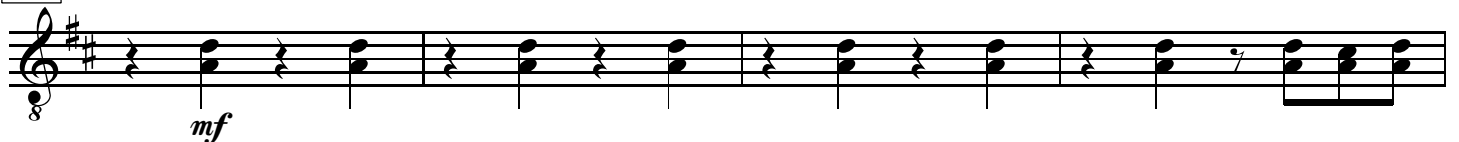
315



319



323



327



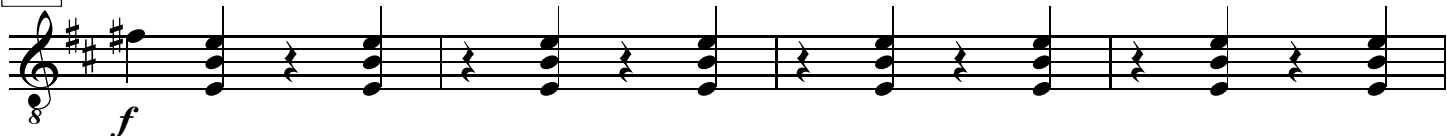
330



333



336



340



344



346

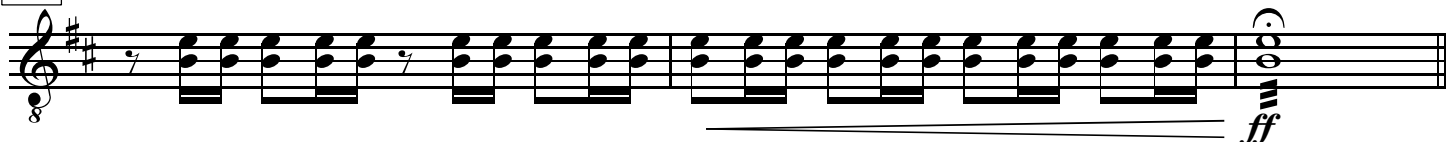


348



稍加快

350



353 同 ♩ = 56 ca.

357 稍加快

361 ♩ = 66 ca.

363

365 ♩ = 69 ca.

367

369

371

373 [唱]

啊 啊

377

381

f

383

385

387

389 稍慢

fff