

中阮 [三弦]

賽馬會中樂360
十面埋伏
(初級)

劉文金、趙咏山 編曲
譚逸昇 改編

【列營】
威武地

Musical notation for measure 1, bass clef, key signature of two sharps (F# and C#). The measure starts with a forte (*f*) dynamic. It features a series of eighth notes in a descending sequence, followed by a triplet of eighth notes. A fermata is placed over the final note of the triplet. The dynamic changes to mezzo-piano (*mp*) and then fortissimo (*ff*) at the end of the measure.

Musical notation for measure 4, bass clef, key signature of two sharps. The measure begins with a mezzo-piano (*mp*) dynamic and transitions to forte (*f*). It contains a triplet of eighth notes and ends with a fermata.

Musical notation for measure 9, bass clef, key signature of two sharps. The measure starts with a forte (*f*) dynamic and includes a ritardando (*rit.*) marking. It features two triplet markings over eighth notes and a tempo marking of "慢" (Adagio).

Musical notation for measure 14, bass clef, key signature of two sharps. The measure is marked "由慢漸快 行板" (Ritardando then Accelerando, Adagio). It begins with a mezzo-piano (*mp*) dynamic and consists of eighth notes with rests.

Musical notation for measure 18, bass clef, key signature of two sharps. The measure consists of eighth notes with rests.

Musical notation for measure 22, bass clef, key signature of two sharps. The measure is marked "稍穩" (Steady). It starts with a mezzo-piano (*mp*) dynamic and features a fermata over the first note.

Musical notation for measure 28, bass clef, key signature of two sharps. The measure is marked "由慢漸快 行板" (Ritardando then Accelerando, Adagio). It begins with a piano (*p*) dynamic and consists of eighth notes with rests.

Musical notation for measure 33, bass clef, key signature of two sharps. The measure starts with a mezzo-piano (*mp*) dynamic and transitions to forte (*f*). It features a fermata over the final note.

Musical notation for measure 38, bass clef, key signature of two sharps. The measure consists of eighth notes with rests.

44 由慢漸快

ff

45

49 【吹打】自由
(笛子)

53 中速

p

58

4

65

mf

70

75

rit.

80 【埋伏】

由慢漸快

sfp *p*

3

86 (柳琴)

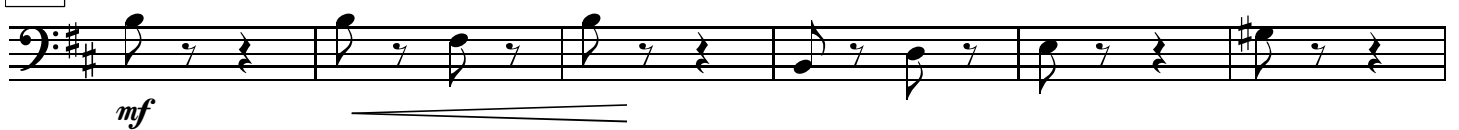
90



96



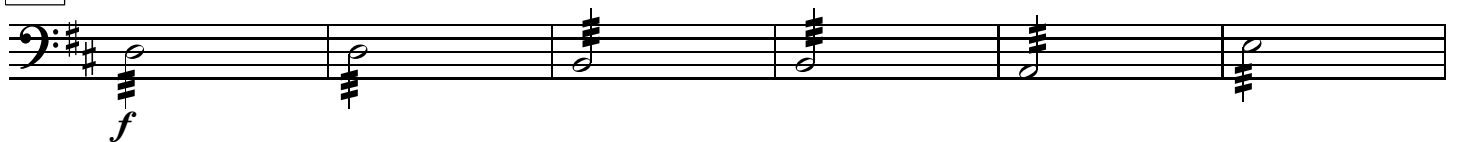
102



108

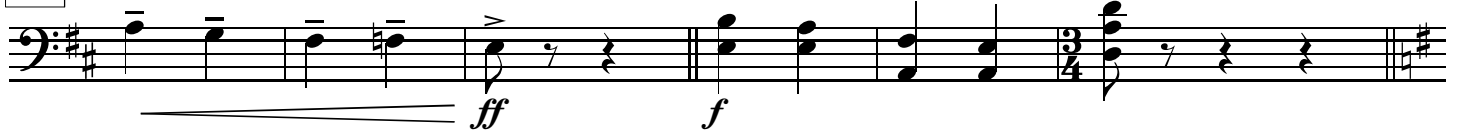


114

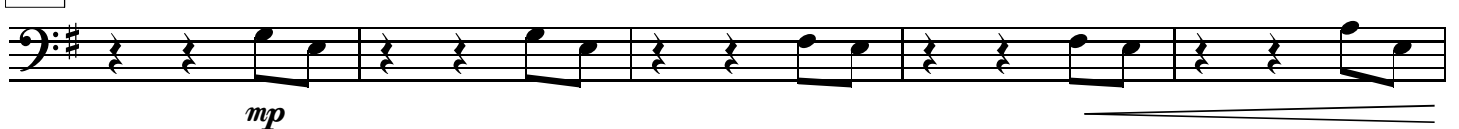


【小戰】
突轉快板

120



126



131



137

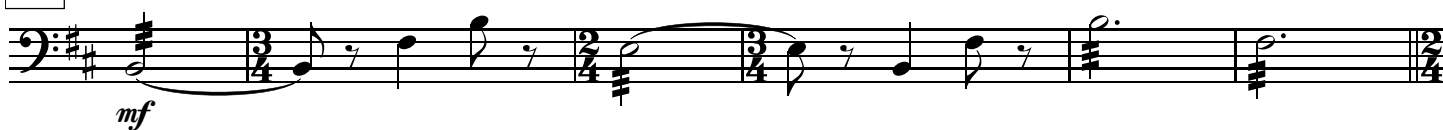


143

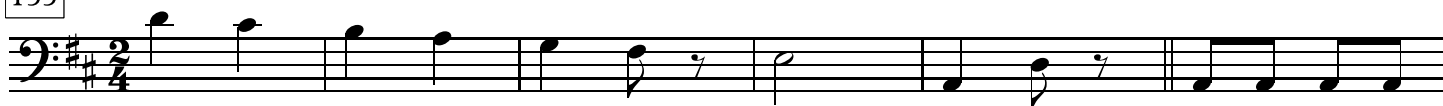


149

【奏凱】



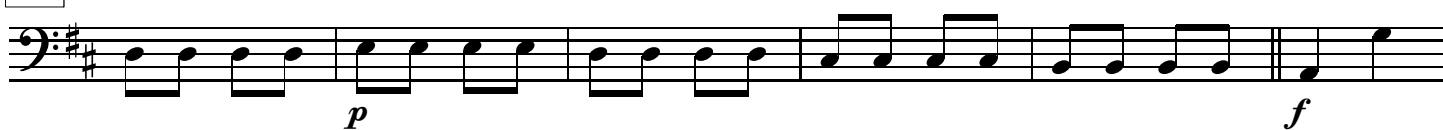
155



161



167

molto rit.

173

慢



179

